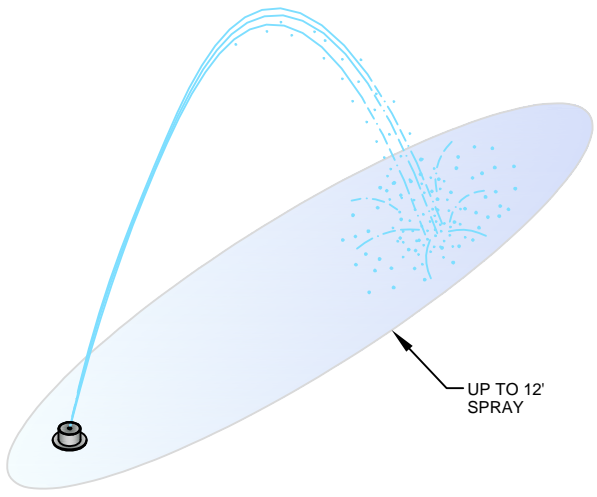
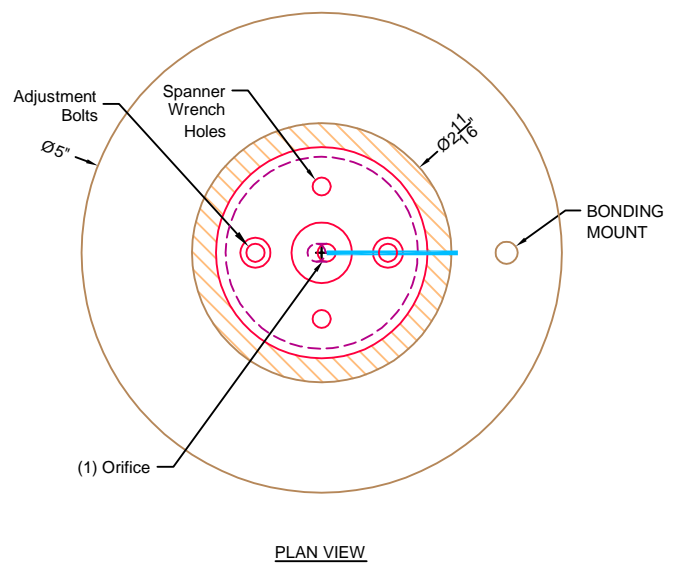


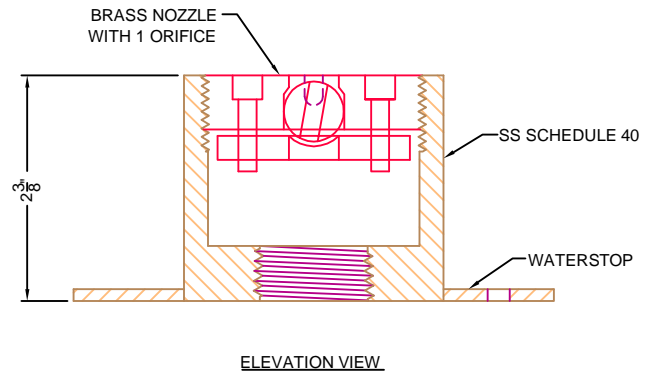
Effect Footprint



Directional Deck Jet

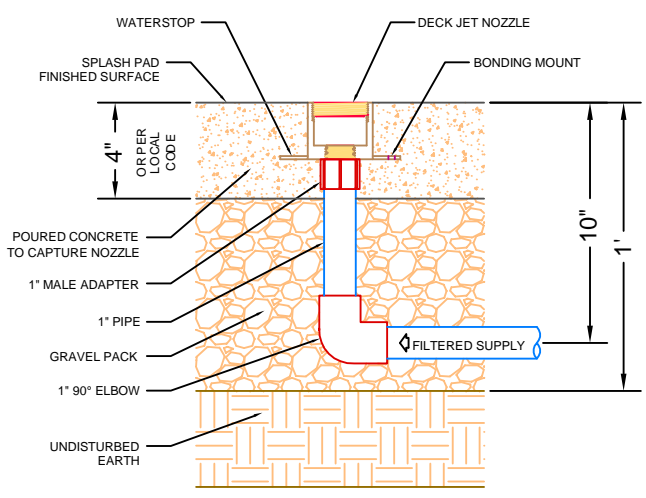


PLAN VIEW



ELEVATION VIEW

Installation



Specifications

- Mounting:**
Top of nozzles are flush with finish surface. Body is completely buried in concrete.
- Materials:**
Body - All Stainless Steel construction.
Anchor Flange & Fasteners - All Stainless Steel Construction.
- Hydraulics:**
3 GPM @ 20 PSI.
- Supply Line:**
Minimum 1"
- Controller:**
Required - One solenoid input.

Directional Deck Jet

Waterworks International 

St. Louis, MO * Chicago, IL
800-932-3123
Fax 636-376-3242