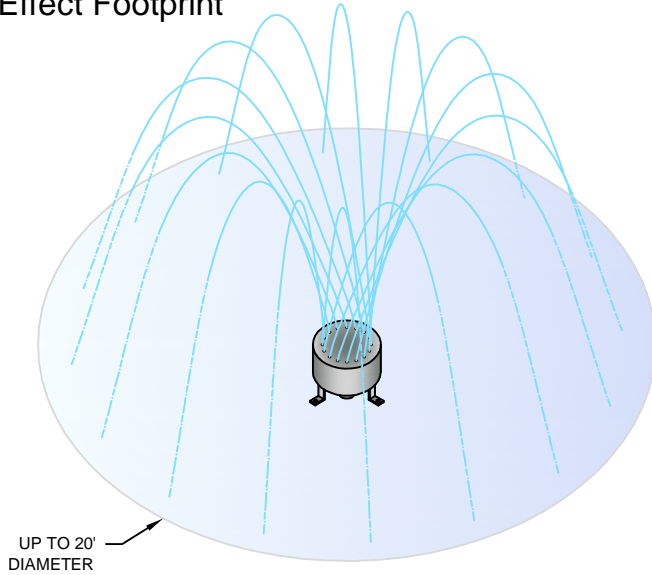
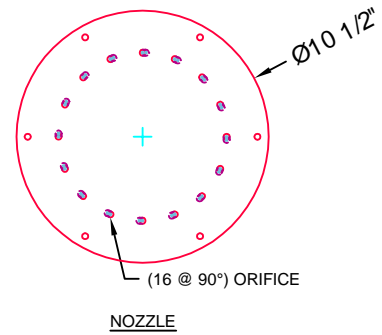


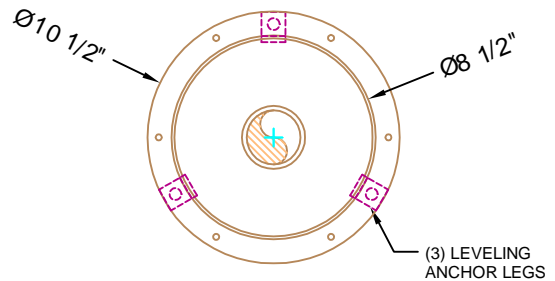
Effect Footprint



Crown Weave

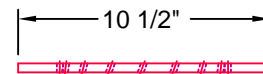


NOZZLE

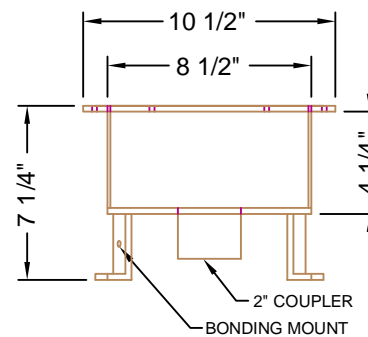


BODY

TOP VIEW



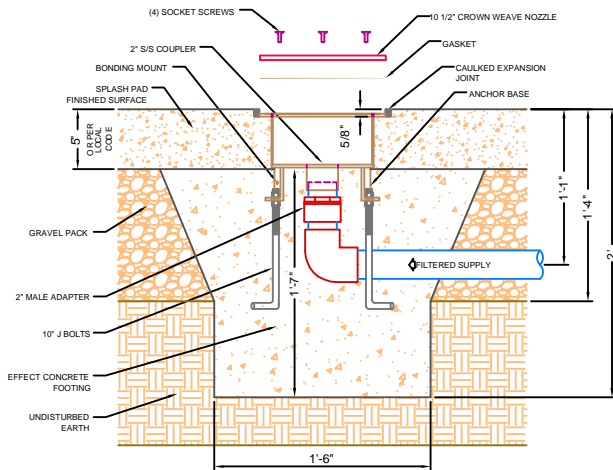
NOZZLE



BODY

ELEVATION VIEW

Anchor Assembly



Specifications

Mounting:

Top of nozzles are flush with finish surface .Body is completely burried in concrete .

Materials:

Body -All Stainless Steel construction .
Anchor Flange &Fasteners -All Stainless Steel Construction .

Hydraulics:

30 GPM @ 20PSI.

Supply Line:

Minimum 2

Controller:

Required - One solenoid input.

Crown Weave Water Feature



St. Louis, MO * Chicago, IL
800-932-3123
Fax 636-376-3242

PN - 12175

DATE: 8/10/11

SCALE: 1 1/2" = 1'

WWW.WATERWORKSINTERNATIONAL.COM